

HP Elite S340c 34-in Curved Display



Estimated impact

370 - 815[†]
kgCO₂e

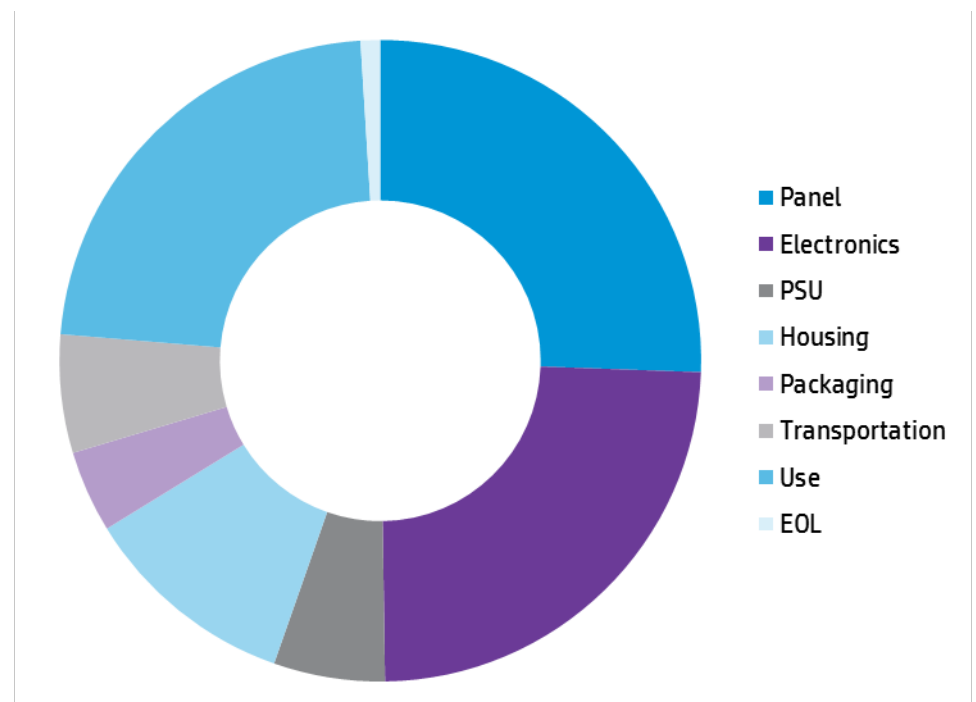
[†]All estimates of carbon footprint are uncertain. HP Inc reports the 5th and 95th percentile of the carbon footprint estimate to reflect that uncertainty. For this product, that estimate has a mean of 565 kg of CO₂-e and standard deviation of 145 kg of CO₂-e. Other organizations might report this value as 565 +/- 145 kg of CO₂-e.



As part of HP's commitment to continually improve the environmental performance of our products, we are focusing on better understanding the impacts that occur at different stages of the product life cycle through the use of product carbon footprinting (PCF). A product carbon footprint is defined as the total amount of greenhouse gases emitted directly and indirectly by a product over its lifetime. It includes emissions from materials extraction, manufacturing, distribution, use, and end-of-life management.

The information provided here was calculated using the PAIA tool^{††} and represents the lifecycle carbon footprint of an industry-average display with the specifications listed in Under Assumptions on Page 2.

GHG emissions [percentage of total]

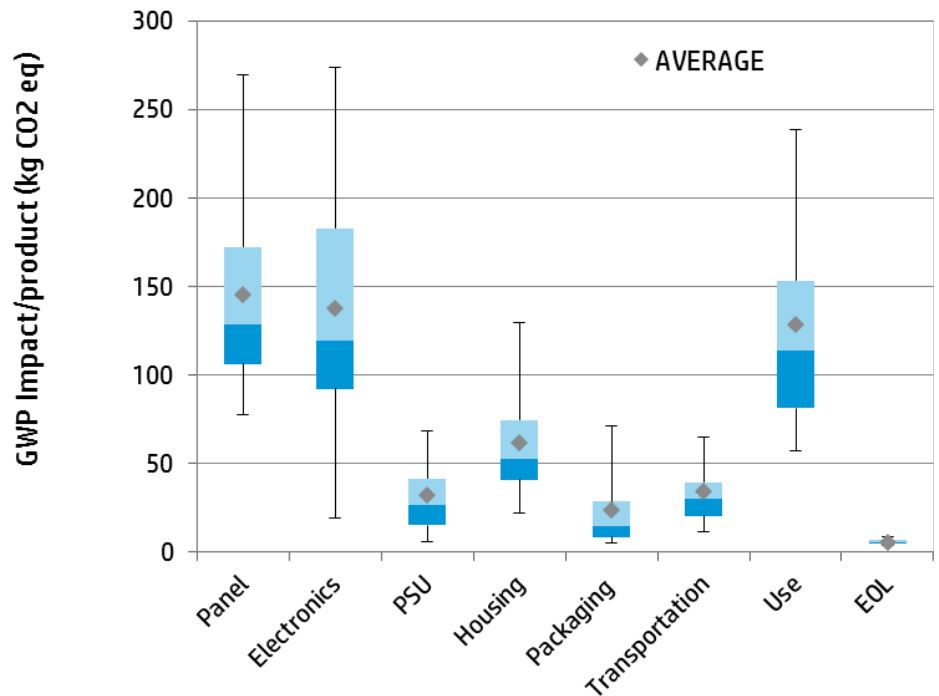


Disclaimer

††This calculation was done using the Product Attribute to Impact Algorithm (PAIA) model, Display Version 1_11.22, copyright by the ICT Benchmarking collaboration, which includes the Massachusetts Institute of Technology's Materials Systems Laboratory and partners. PAIA estimates the carbon footprint of different PC products, including uncertainty of the result. Uncertainty is included in order to provide our customers with greater transparency in estimation results. The PAIA tool is not released for use by the public. Results shown here are subject to change as the tool is updated.

The plot below shows the uncertainty associated with the various elements of the product carbon footprint. Uncertainty in product carbon footprinting stems from differences in the data, assumptions, and methodology used. Since uncertainty can be quite large, results should not be compared with those of other products, but rather are intended to inform product design and life cycle management decisions.

GHG emissions [kg CO2 eq]



Assumptions

Lifetime of product	5 years
Use location	Worldwide
Use energy demand (Yearly TEC)	41.5 kWh
Screen size	34 inches
Product weight	12.8 kg
Final manufacturing location	China

Additional product environmental performance

Additional information about HP's carbon footprinting program can be found in HP's yearly Sustainability Report, which is available on the HP Sustainability website. The site also contains IT Eco Declarations, which provide product-specific environmental information, as well as information on HP's product recycling programs.

Learn more at [HP's Sustainability Website](#)

