



Product End-of-Life Disassembly Instructions

Product Category: Notebooks and Tablet PCs

Marketing Name / Model
[List multiple models if applicable.]

HP EliteBook 2570p Notebook PC

Purpose: The document is intended for use by end-of-life recyclers or treatment facilities. It provides the basic instructions for the disassembly of HP products to remove components and materials requiring selective treatment, as defined by EU directive 2002/96/EC, Waste Electrical and Electronic Equipment (WEEE).

1.0 Items Requiring Selective Treatment

1.1 Items listed below are classified as requiring selective treatment.

1.2 Enter the quantity of items contained within the product which require selective treatment in the right column, as applicable.

Item Description	Notes	Quantity of items included in product
Printed Circuit Boards (PCB) or Printed Circuit Assemblies (PCA)	With a surface greater than 10 sq cm	1
Batteries	All types including standard alkaline and lithium coin or button style batteries	4
Mercury-containing components	For example, mercury in lamps, display backlights, scanner lamps, switches, batteries	0
Liquid Crystal Displays (LCD) with a surface greater than 100 sq cm	Includes background illuminated displays with gas discharge lamps	1
Cathode Ray Tubes (CRT)		0
Capacitors / condensers (Containing PCB/PCT)		0
Electrolytic Capacitors / Condensers measuring greater than 2.5 cm in diameter or height		0
External electrical cables and cords		0
Gas Discharge Lamps		0
Plastics containing Brominated Flame Retardants weighing > 25 grams (not including PCBs or PCAs already listed as a separate item above)		0
Components and parts containing toner and ink, including liquids, semi-liquids (gel/paste) and toner	Include the cartridges, print heads, tubes, vent chambers, and service stations.	0
Components and waste containing asbestos		0

Components, parts and materials containing refractory ceramic fibers		0
Components, parts and materials containing radioactive substances		0

2.0 Tools Required

List the type and size of the tools that would typically be used to disassemble the product to a point where components and materials requiring selective treatment can be removed.

Tool Description	Tool Size (if applicable)
Description #1	Cross head of screwdriver
Description #2	TORX T8 (2.31mm)
Description #3	
Description #4	
Description #5	

3.0 Product Disassembly Process

3.1 List the basic steps that should typically be followed to remove components and materials requiring selective treatment:

1. Follow steps described in Disassembly instruction (file attached)
2. If parts can be removed without using a tool, remove it first.
3. Use correct screwdriver and torque value before unlock the screw.
- 4.
- 5.
- 6.
- 7.
- 8.

3.2 Optional Graphic. If the disassembly process is complex, insert a graphic illustration below to identify the items contained in the product that require selective treatment (with descriptions and arrows identifying locations).



Standard Operation Procedure

Document No. : Simba FA DIS ASS'Y SOP

Station : 1(1/1)

Name : Disassemble Battery

Ver. : 0.1

Date : 2012/03/30

Step :

1. Slide the battery latch to the right, then remove the battery. (Fig.1)



Fig.1

Notes : If finding anything uncommon, notice foreman or assistant at once.

Holding fixture list (holding fixture standard)	Qty	Holding fixture list (holding fixture standard)	Qty

Tabulator : Alicia Chien

Issue department : NPSU-SE



Standard Operation Procedure

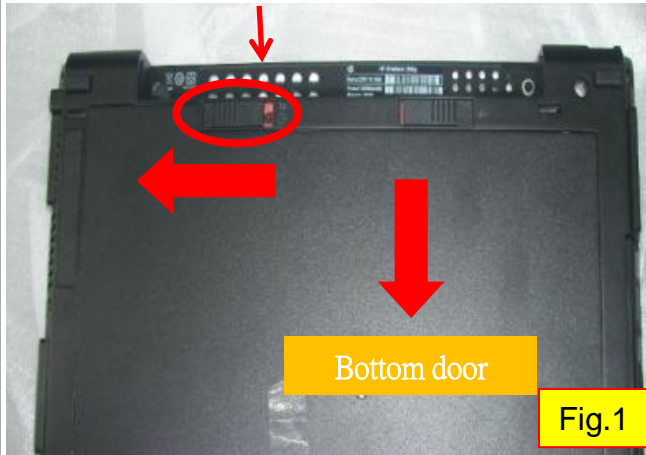
Document No. : Simba FA DIS ASS'Y SOP

Station : 2(1/1)

Name : Disassemble Bottom Door

Ver. : 0.1 Date : 2012/03/30

Bottom door latch



Step :

1. Slide the bottom door latch to the left, then remove the bottom door (6070B0587601). (Fig.1)

Notes : If finding anything uncommon, notice foreman or assistant at once.

Holding fixture list (holding fixture standard)	Qty	Holding fixture list (holding fixture standard)	Qty

Tabulator : Alicia Chien

Issue department : NPSU-SE



Standard Operation Procedure

Document No. : Simba FA DIS ASS'Y SOP

Station : 3(1/1)

Name : Disassemble DDR

Ver. : 0.1

Date : 2012/03/30

Step :

1. Remove all DDRs from M/B. (Fig.1) ◦

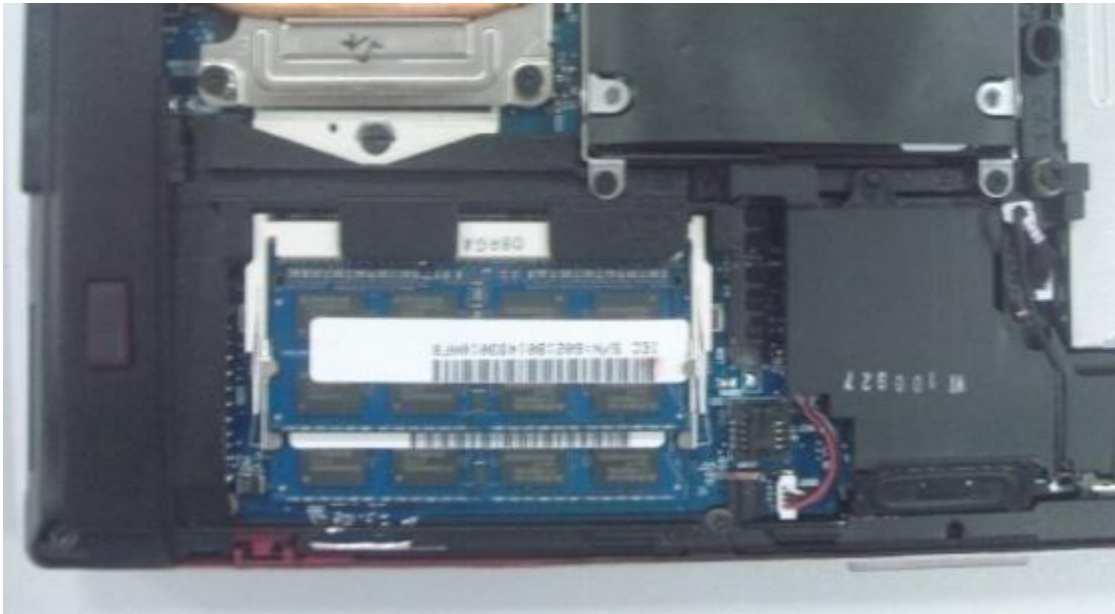


Fig.1

Notes : If finding anything uncommon, notice foreman or assistant at once.

Holding fixture list (holding fixture standard)	Qty	Holding fixture list (holding fixture standard)	Qty

Tabulator : Alicia Chien

Issue department : NPSU-SE



Standard Operation Procedure

Document No. : Simba FA DIS ASS'Y SOP

Station : 4(1/1)

Name : Loosen Screw and Disassemble ODD Ver. : 0.1

Date : 2012/03/30

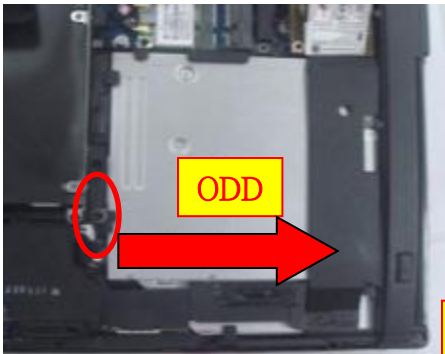


Fig.1

Step :

1. Loosen ODD set screw * 1. (Fig.1)
2. Slide the ODD to the right, then remove the ODD from the base. (Fig.1)
(W/O ODD, disassemble the dummy ODD (6070B0484401)).



Notes : If finding anything uncommon, notice foreman or assistant at once.

Holding fixture list (holding fixture standard)	Qty	Holding fixture list (holding fixture standard)	Qty
Electric cross screwdriver #1	1		

Tabulator : Alicia Chien

Issue department : NPSU-SE



Standard Operation Procedure

Document No. : Simba FA DIS ASS'Y SOP

Station : 5(1/1)

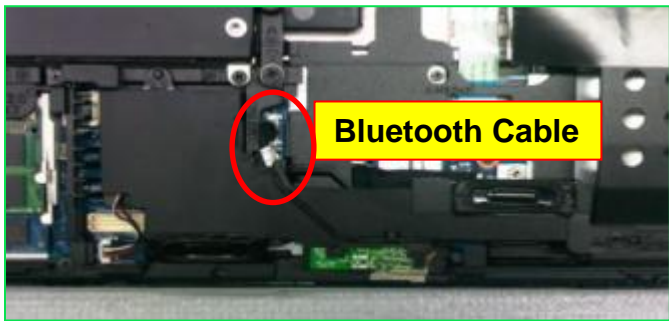
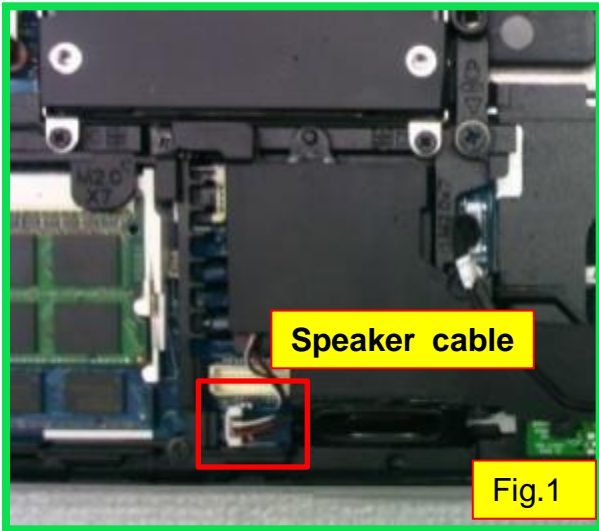
Name : Pull out the CNTR

Ver. : 0.1

Date : 2012/03/30

Step :

1. Pull out the speaker cable CNTR from M/B.
(Fig.1)
2. Pull out the B/T Cable CNTR from M/B, take out the cable from hook. (Fig.2)



Notes : If finding anything uncommon, notice foreman or assistant at once.

Holding fixture list (holding fixture standard)	Qty	Holding fixture list (holding fixture standard)	Qty

Tabulator : Alicia Chien

Issue department : NPSU-SE



Standard Operation Procedure

Document No. : Simba FA DIS ASS'Y SOP

Station : 6(1/1)

Name : Disassemble Speaker and Bluetooth Ver. : 0.1

Date : 2012/03/30

Step :

1. Loosen screws, disassemble speaker.
 (6052B0185401) * 1 → marked "1"
 (6052B0103801) * 2 → marked "2,3" (Fig.1).
2. Take out the bluetooth module from the BT slot of speaker.

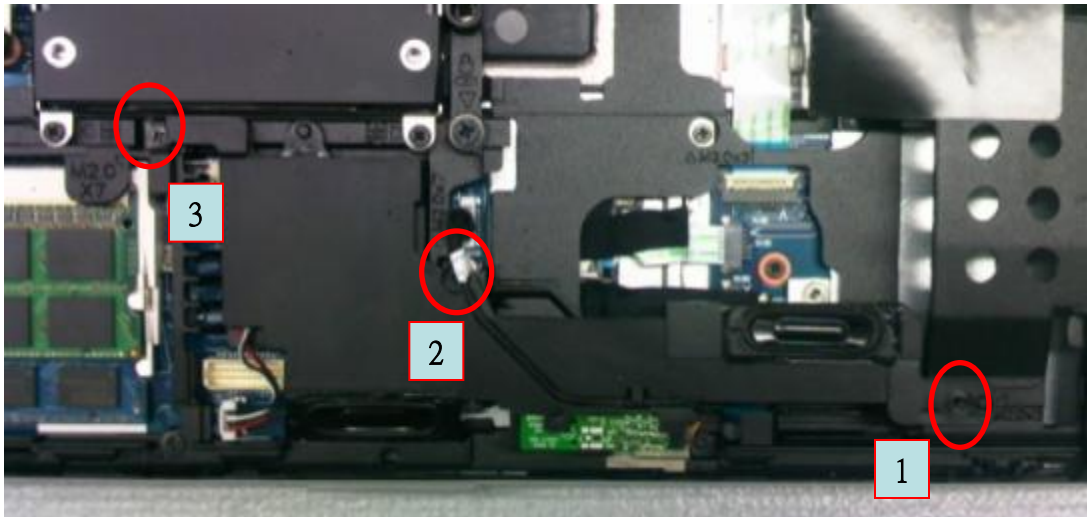


Fig.1

Notes : If finding anything uncommon, notice foreman or assistant at once.

Holding fixture list (holding fixture standard)	Qty	Holding fixture list (holding fixture standard)	Qty
Electric cross screwdriver #1	1		

Tabulator : Alicia Chien

Issue department : NPSU-SE



Standard Operation Procedure

Document No. : Simba FA DIS ASS'Y SOP

Station : 7(1/1)

Name : Loosen Screws and Disassemble HDD Ver. : 0.1

Date : 2012/03/30

Step :

1. Loosen HDD set screw * 4. (Fig.1)
2. Remove the HDD.

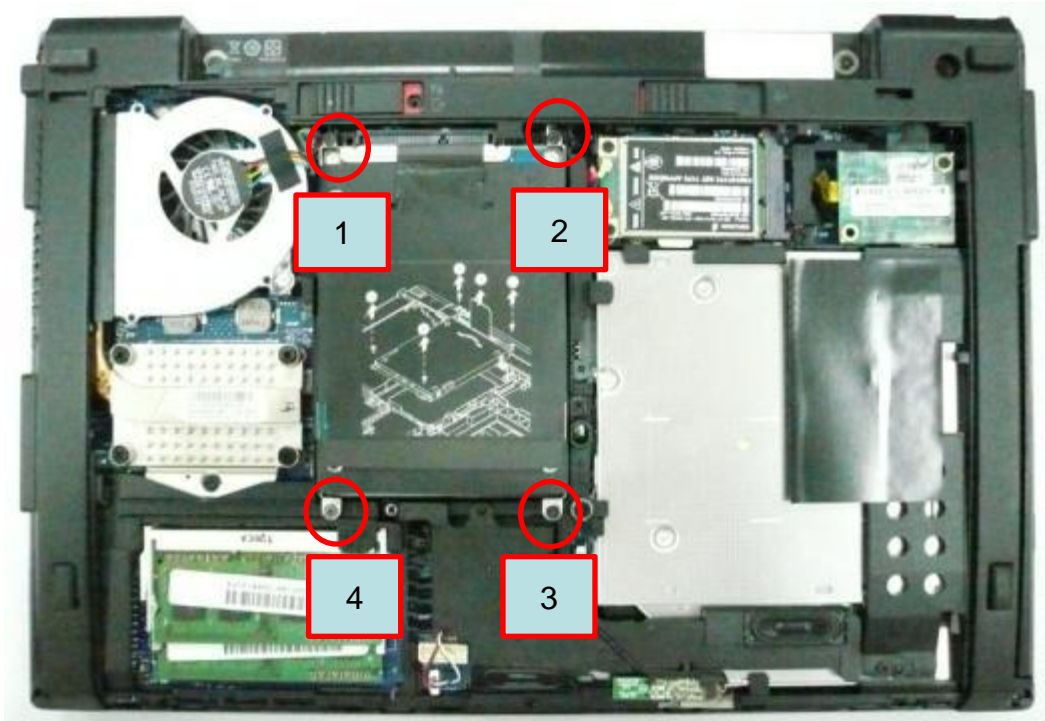


Fig.1

Notes : If finding anything uncommon, notice foreman or assistant at once.

Holding fixture list (holding fixture standard)	Qty	Holding fixture list (holding fixture standard)	Qty
Electric cross screwdriver #1	1		

Tabulator : Alicia Chien

Issue department : NPSU-SE



Standard Operation Procedure

Document No. : Simba FA DIS ASS'Y SOP

Station : 8(1/1)

Name : Loosen Screws and Remove Mylar

Ver. : 0.1

Date : 2012/03/30



Fig.1

Step :

1. Loosen HDD BRKT Screw (6052B0131801)
* 4. (Fig.1/ Fig.2)
2. If the SN# listed below, remove the rubber
* 2(6054B1000601) (Fig.3)

	SN	SPS
HDD	6022B0109302	627989-001
	6022B0109301	627988-001



Fig.2



Fig.3

Notes : If finding anything uncommon, notice foreman or assistant at once.

Holding fixture list (holding fixture standard)	Qty	Holding fixture list (holding fixture standard)	Qty
Electric cross screwdriver #1	1		
HDD Support fixture	1		

Tabulator : Alicia Chien

Issue department : NPSU-SE



Standard Operation Procedure

Document No. : Simba FA DIS ASS'Y SOP

Station : 9(1/1)

Name : Disassemble Modem

Ver. : 0.1

Date : 2012/03/30

Step :

1. Loosen screw (6052B0185401) * 1, disassemble modem from M/B. (Fig.1)
2. Disassemble modem cable and modem module.
3. Pull out the RJ11 cable (6017B0296201) from modem. (Fig.1)
4. W/O modem, no need to remove RJ cable, but need to remove dummy cover. (6051B0700601) (Fig.2)



Fig.1



Fig.2

Notes : If finding anything uncommon, notice foreman or assistant at once.

Holding fixture list (holding fixture standard)	Qty	Holding fixture list (holding fixture standard)	Qty



Standard Operation Procedure

Document No. : Simba FA DIS ASS'Y SOP

Station : 10(1/1)

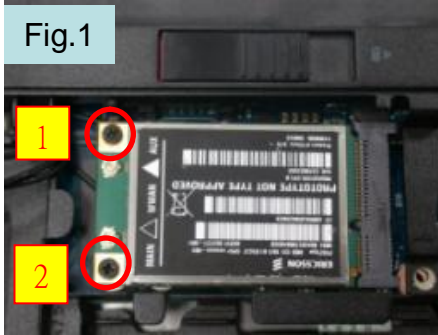
Name : Disassemble WWAN Card

Ver. : 0.1 Date : 2012/03/30

Step :

1. Disassemble WWAN cable * 2. (Fig.1) °
2. Loosen screw (6052B0185401) * 2.
3. Disassemble WWAN card from M/B.

Fig.1



Notes : If finding anything uncommon, notice foreman or assistant at once.

Holding fixture list (holding fixture standard)	Qty	Holding fixture list (holding fixture standard)	Qty
Electric cross screwdriver #1	1		



Standard Operation Procedure

Document No. : Simba FA DIS ASS'Y SOP

Station : 11(1/1)

Name : Disassemble WLAN Card

Ver. : 0.1 Date : 2012/03/30

Step :

1. Pull out the WLAN CNTR, disassemble WLAN cable * 2. (Fig.1)
2. Loosen screw (6052B0185401) * 2. (Fig.2)



Fig.1

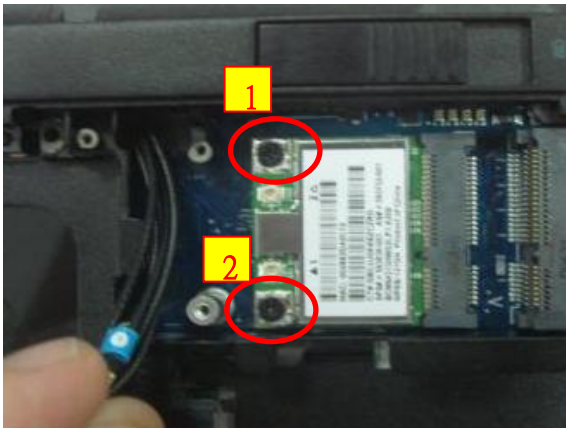


Fig.2

Notes : If finding anything uncommon, notice foreman or assistant at once.

Holding fixture list (holding fixture standard)	Qty	Holding fixture list (holding fixture standard)	Qty

Tabulator : Alicia Chien

Issue department : NPSU-SE



Standard Operation Procedure

Document No. : Simba FA DIS ASS'Y SOP

Station : 12(1/1)

Name : Disassemble Fan

Ver. : 0.1

Date : 2012/03/30

Step :

1. Loosen set screw *2, disassemble fan (6033B0024501). (Fig.1)

2. Disassemble fan cable from M/B CNTR. (Fig.2).

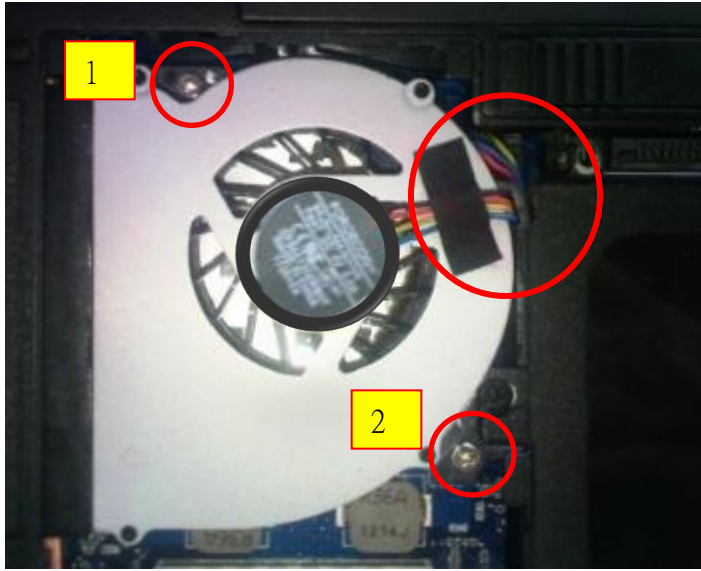


Fig.1



Fig.2

Notes : If finding anything uncommon, notice foreman or assistant at once.

Holding fixture list (holding fixture standard)	Qty	Holding fixture list (holding fixture standard)	Qty
Electric cross screwdriver #1	1		

Tabulator : Alicia Chien

Issue department : NPSU-SE



Standard Operation Procedure

Document No. : Simba FA DIS ASS'Y SOP

Station : 13(1/1)

Name : Loosen Screws and Disassemble Thermal Ver. : 0.1 Date : 2012/03/30

Step :

1. Loosen thermal set screw * 4. (Fig.1)
2. Disassemble thermal (6043B0114401) from M/B. (Fig.2)

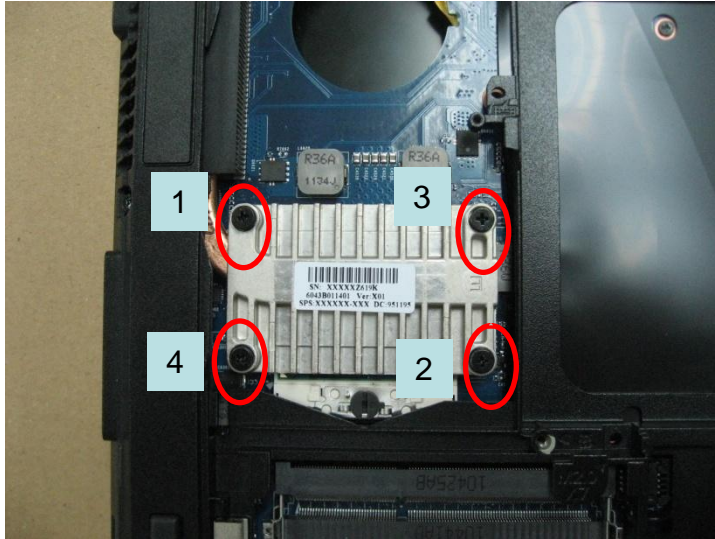


Fig.1



Fig.2

Notes : If finding anything uncommon, notice foreman or assistant at once.

Holding fixture list (holding fixture standard)	Qty	Holding fixture list (holding fixture standard)	Qty
Electric cross screwdriver #1	1		

Tabulator : Alicia Chien

Issue department : NPSU-SE



Standard Operation Procedure

Document No. : Simba FA DIS ASS'Y SOP

Station : 14(1/1)

Name : Remove CPU Mylar and CPU

Ver. : 0.1

Date : 2012/03/30

Step :

1. Remove CPU Mylar (6054B0767001). (Fig.1)
2. Disassemble the CPU by slot screwdriver and vacuum pen. (Fig.2)



Fig.1

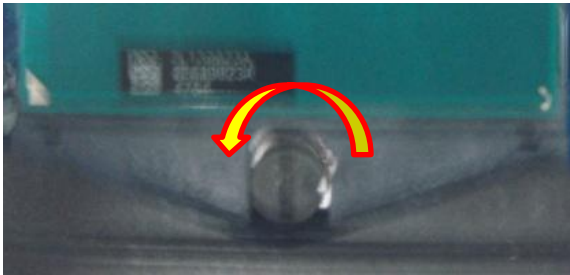


Fig.2

Notes : If finding anything uncommon, notice foreman or assistant at once.

Holding fixture list (holding fixture standard)	Qty	Holding fixture list (holding fixture standard)	Qty
Slot screwdriver	1		
Vacuum pen	1		

Tabulator : Alicia Chien

Issue department : NPSU-SE



Standard Operation Procedure

Document No. : Simba FA DIS ASS'Y SOP

Station : 15(1/1)

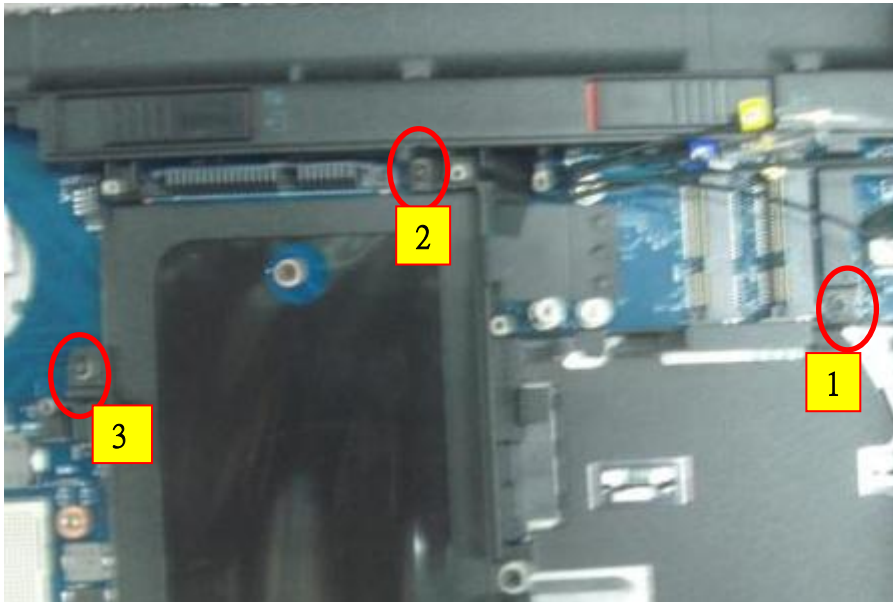
Name : Loosen BTCB Screws

Ver. : 0.1

Date : 2012/03/30

Step :

1. Loosen BTCB set screw * 3.



Notes : If finding anything uncommon, notice foreman or assistant at once.

Holding fixture list (holding fixture standard)	Qty	Holding fixture list (holding fixture standard)	Qty
Electric cross screwdriver #1	1		

Tabulator : Alicia Chien

Issue department : NPSU-SE



Standard Operation Procedure

Document No. : Simba FA DIS ASS'Y SOP

Station : 16(1/1)

Name : Disassemble Keyboard

Ver. : 0.1

Date : 2012/03/30

Step :

1. Disassemble Point FFC from M/B CNTR. (Fig.1)
2. Disassemble K/B FFC from M/B CNTR (Fig.2)
3. Poke the K/B. (Fig.3)

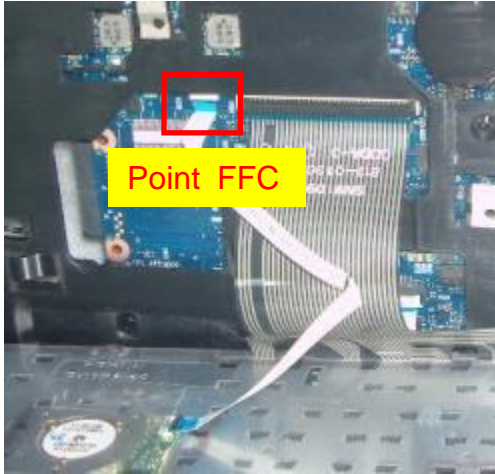


Fig.1

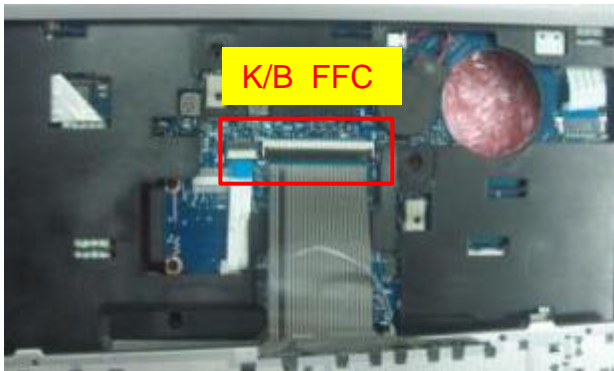


Fig.2

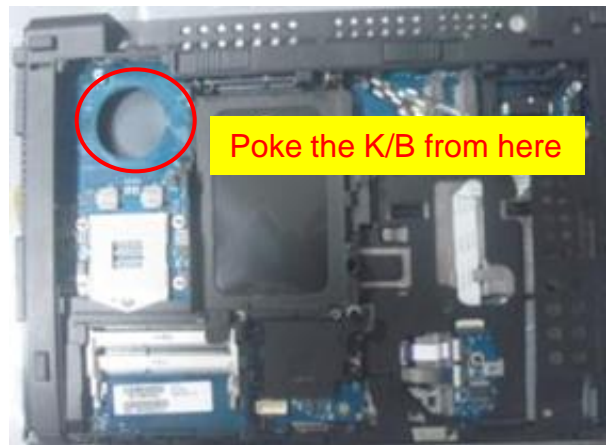


Fig.3

Notes : If finding anything uncommon, notice foreman or assistant at once.

Holding fixture list (holding fixture standard)	Qty	Holding fixture list (holding fixture standard)	Qty

Tabulator : Alicia Chien

Issue department : NPSU-SE



Standard Operation Procedure

Document No. : Simba FA DIS ASS'Y SOP

Station : 17(1/1)

Name : Disassemble FFC

Ver. : 0.1

Date : 2012/03/30

Step :

1. Disassemble FP module FFC, Function/B FFC, Power/B FFC from M/B.

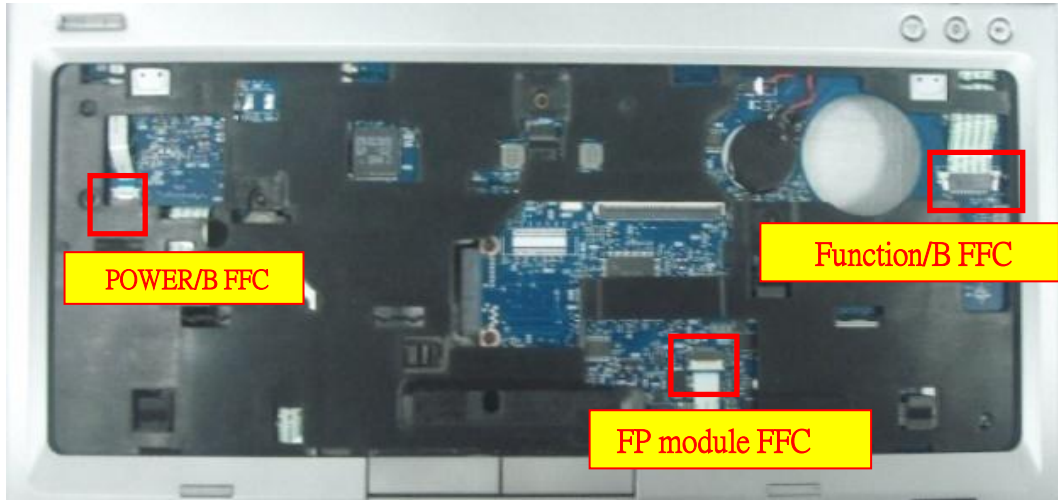


Fig.1

Notes : If finding anything uncommon, notice foreman or assistant at once.

Holding fixture list (holding fixture standard)	Qty	Holding fixture list (holding fixture standard)	Qty

Tabulator : Alicia Chien

Issue department : NPSU-SE



Standard Operation Procedure

Document No. : Simba FA DIS ASS'Y SOP

Station : 18(1/1)

Name : Loosen Hinge Screws

Ver. : 0.1

Date : 2012/03/30

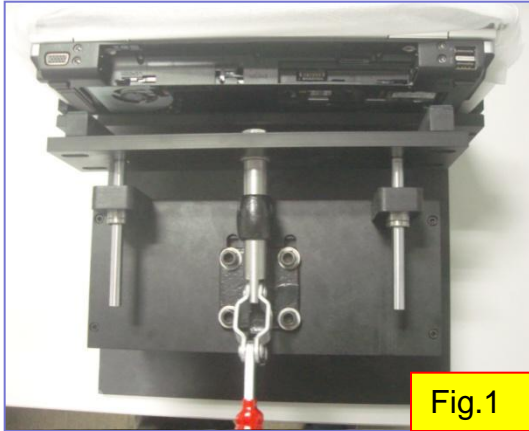


Fig.1

Step :

1. Put the notebook on the hinge cover support fixture. (Fig.1)
2. Loosen hinge screw (6052B0155201) * 4. (Fig.2)

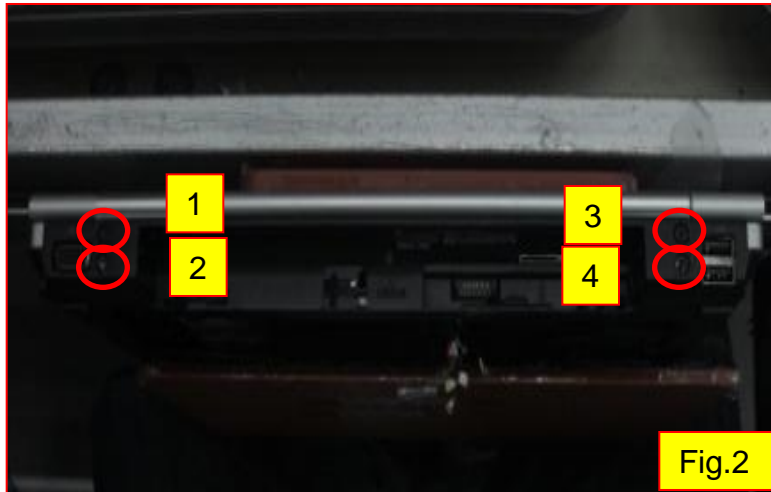


Fig.2

Notes : If finding anything uncommon, notice foreman or assistant at once.

Holding fixture list (holding fixture standard)	Qty	Holding fixture list (holding fixture standard)	Qty
Electric torx screwdriver	1		
Hinge cover support fixture	1		



Standard Operation Procedure

Document No. : Simba FA DIS ASS'Y SOP

Station : 19(1/1)

Name : Loosen Screws

Ver. : 0.1

Date : 2012/03/30

Step :

1. Loosen screw (6052B0130801) * 2
(In the battery area) (Fig.1/Fig.2)
2. Loosen screw (6052B0185401)* 2
(On the side of ODD) (Fig.3)



Fig.1



Fig.2



Fig.3

Notes : If finding anything uncommon, notice foreman or assistant at once.

Holding fixture list (holding fixture standard)	Qty	Holding fixture list (holding fixture standard)	Qty
Electric cross screwdriver #0(Low speed)	1		
Hinge cover support fixture	1		

Tabulator : Alicia Chien

Issue department : NPSU-SE



Standard Operation Procedure

Document No. : Simba FA DIS ASS'Y SOP

Station : 20(1/1)

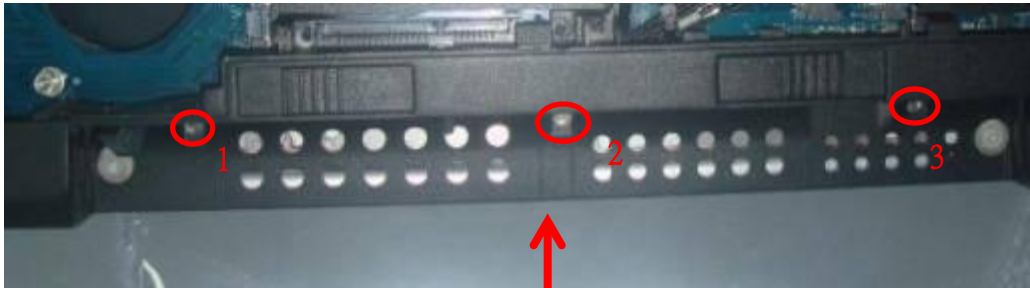
Name : Loosen Screws

Ver. : 0.1

Date : 2012/03/30

Step :

1. Loosen screw (6052B0185401) * 3.



Notes : If finding anything uncommon, notice foreman or assistant at once.

Holding fixture list (holding fixture standard)	Qty	Holding fixture list (holding fixture standard)	Qty
Electric cross screwdriver #1	1		

Tabulator : Alicia Chien

Issue department : NPSU-SE



Standard Operation Procedure

Document No. : Simba FA DIS ASS'Y SOP

Station : 21(1/1)

Name : Loosen BTCB Screws

Ver. : 0.1

Date : 2012/03/30

Step :

1. Loosen BTCB screws (6052B0103801) * 3.



Notes : If finding anything uncommon, notice foreman or assistant at once.

Holding fixture list (holding fixture standard)	Qty	Holding fixture list (holding fixture standard)	Qty
Electric cross screwdriver #1	1		

Tabulator : Alicia Chien

Issue department : NPSU-SE



Standard Operation Procedure

Document No. : Simba FA DIS ASS'Y SOP

Station : 22(1/1)

Name : Loosen BTCB Screws

Ver. : 0.1

Date : 2012/03/30

Step :

1. Loosen BTCB screw (6052B0155201) * 5.
(Fig.1)



Notes : If finding anything uncommon, notice foreman or assistant at once.

Holding fixture list (holding fixture standard)	Qty	Holding fixture list (holding fixture standard)	Qty
Electric torx screwdriver	1		

Tabulator : Alicia Chien

Issue department : NPSU-SE



Standard Operation Procedure

Document No. : Simba FA DIS ASS'Y SOP

Station : 23(1/1)

Name : Disassemble BTCB

Ver. : 0.1

Date : 2012/03/30

Step :

1. Disassemble BTCB. (Fig.2)



Notes : If finding anything uncommon, notice foreman or assistant at once.

Holding fixture list (holding fixture standard)	Qty	Holding fixture list (holding fixture standard)	Qty

Tabulator : Alicia Chien

Issue department : NPSU-SE



Standard Operation Procedure

Document No. : Simba FA DIS ASS'Y SOP

Station : 24(1/1)

Name : Disassemble LCM Cable and Antenna Ver. : 0.1

Date : 2012/03/30

Step :

1. Disassemble LCM cable from M/B. (Fig.1)
2. Disassemble antenna from hooks. (Fig.2)

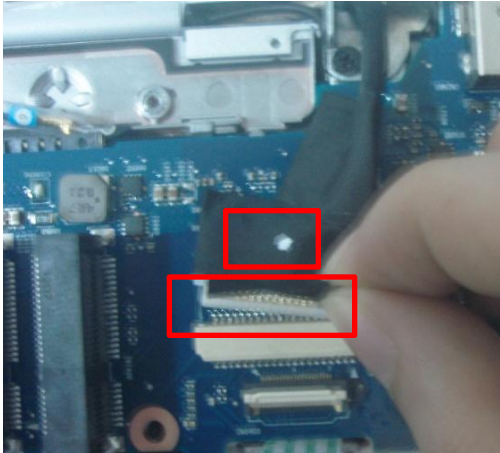


Fig.1

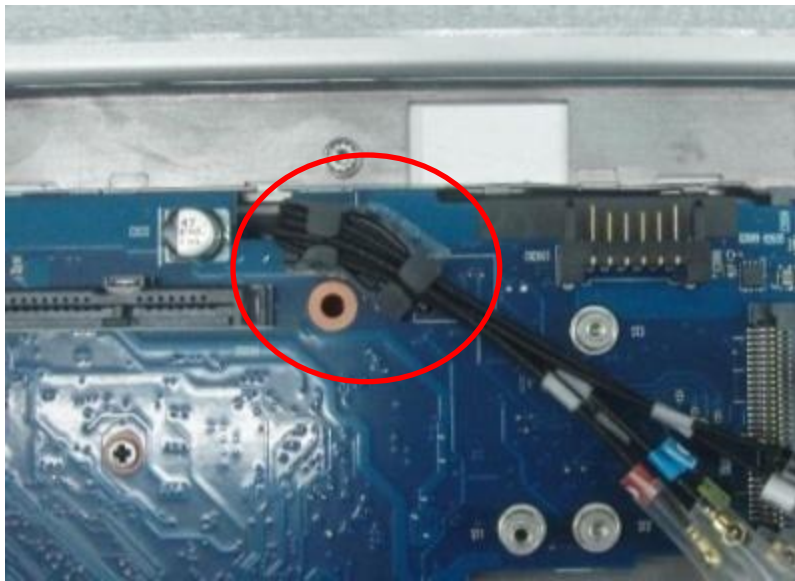


Fig.2

Notes : If finding anything uncommon, notice foreman or assistant at once.

Holding fixture list (holding fixture standard)	Qty	Holding fixture list (holding fixture standard)	Qty



Standard Operation Procedure

Document No. : Simba FA DIS ASS'Y SOP

Station : 25(1/1)

Name : Disassemble M/B

Ver. : 0.1

Date : 2012/03/30

Step :

1. Loosen screw (6052B0185401)*1. (Fig.1)
2. Disassemble smart card FFC from M/B. (Fig.2)
3. Take out the M/B through the audio hole. (Fig.3).



Fig.1

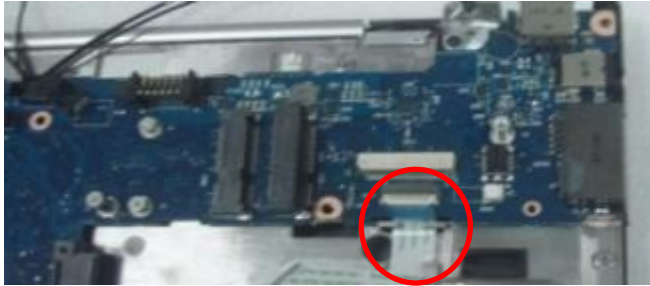


Fig.2



Fig.3

Notes : If finding anything uncommon, notice foreman or assistant at once.

Holding fixture list (holding fixture standard)	Qty	Holding fixture list (holding fixture standard)	Qty
Electric cross screwdriver #1	1		

Tabulator : Alicia Chien

Issue department : NPSU-SE



Standard Operation Procedure

Document No. : Simba FA DIS ASS'Y SOP

Station : 26(1/1)

Name : Disassemble Antenna

Ver. : 0.1

Date : 2012/03/30

Step :

1. Disassemble antenna from routing rib.
(Fig.1)

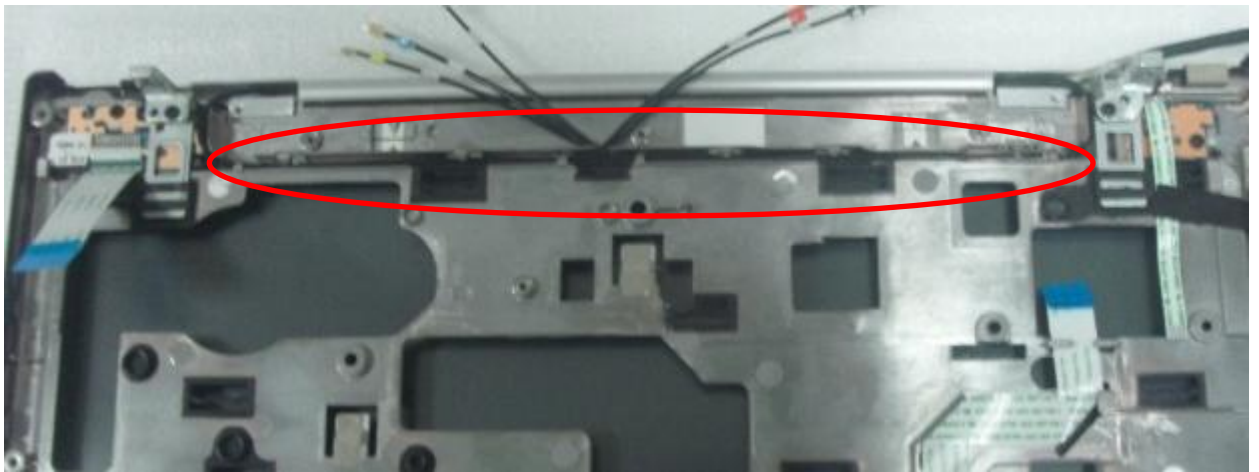


Fig.1

Notes : If finding anything uncommon, notice foreman or assistant at once.

Holding fixture list (holding fixture standard)	Qty	Holding fixture list (holding fixture standard)	Qty

Tabulator : Alicia Chien

Issue department : NPSU-SE



Standard Operation Procedure

Document No. : Simba FA DIS ASS'Y SOP

Station : 27(1/1)

Name : Disassemble TPCB and LCM

Ver. : 0.1

Date : 2012/03/30

Step :

1. Loosen hinge screw (6052B0103801) *2.
(Fig.1/Fig.2)
2. Push the two hinges downward. (Fig.1/Fig.2)
3. Separate the TPCB from LCM. (Fig.3).

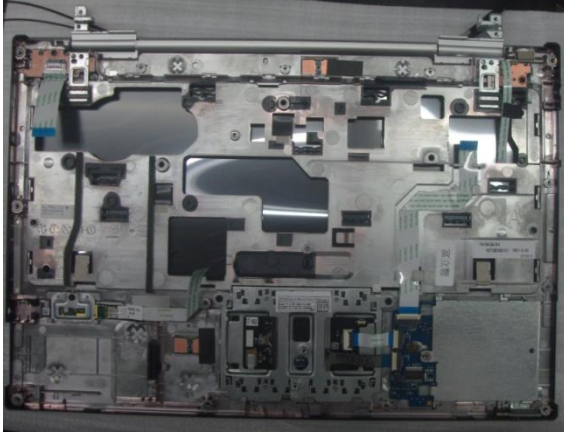


Fig.3



Fig.1



Fig.2

Notes : If finding anything uncommon, notice foreman or assistant at once.

Holding fixture list (holding fixture standard)	Qty	Holding fixture list (holding fixture standard)	Qty
Electric cross screwdriver #1	1		
Support fixture	1		

Tabulator : Alicia Chien

Issue department : NPSU-SE